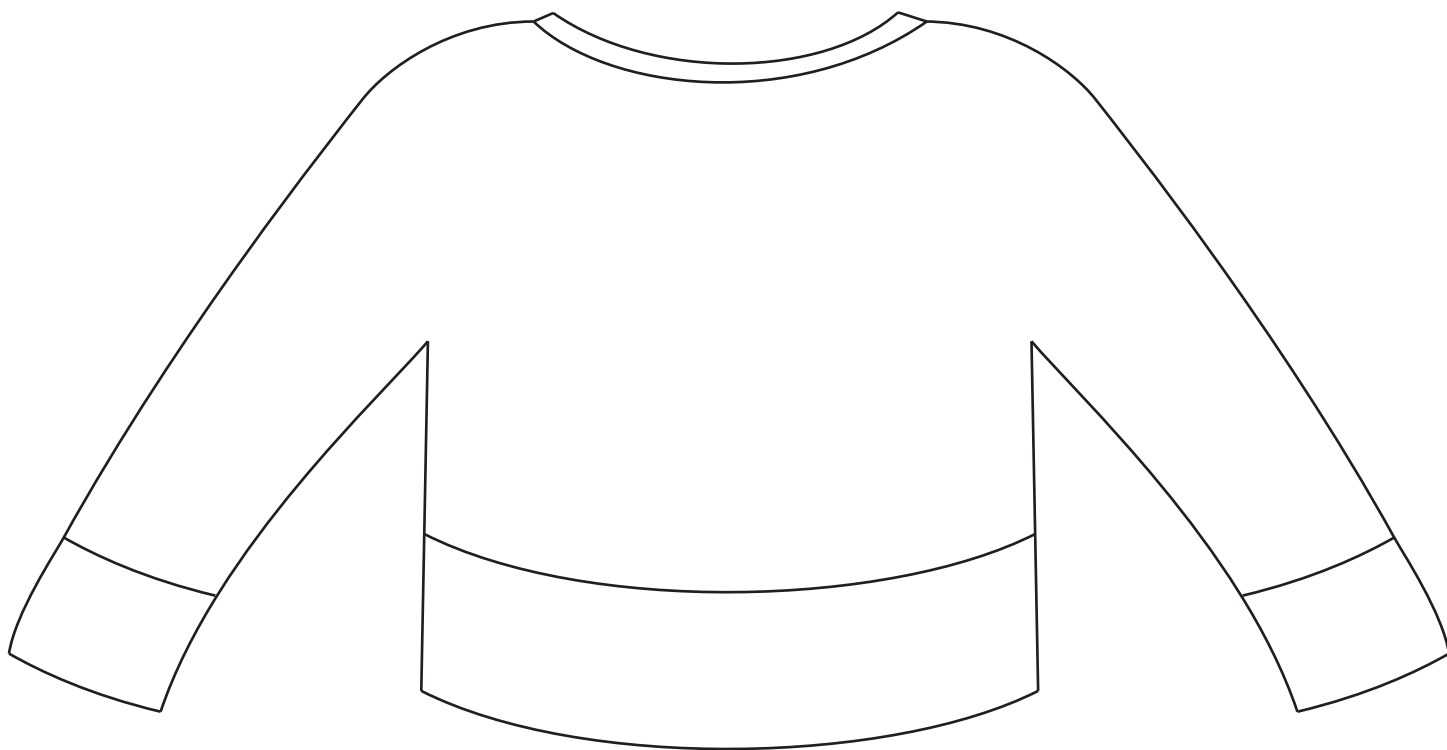


# THE UNAPOLOGETIC KNITTER



## CIRCULAR YOKE MODS

This is an abbreviated template of a hypothetical sweater for example purposes only - this is not a full garment pattern.

## PATTERN SPECS

---

### FINISHED SIZES

**1 (2, 3):** 36 (40, 44)" / 91.5 (101.5, 112) cm chest circumference

### PROJECT GAUGE

18 sts = 4" / 10 cm worked in the round, taken after blocking.

## ABBREVIATIONS

---

BOR: beginning of round

CO: cast on

inc: increase (s/d)

k: knit

M: marker

M1L - make 1 left (an increase method)

p: purl

prev: previous(ly)

rep: repeat

rnd(s): round(s)

RS: right side

sm: slip marker

st(s): stitch(es)

W&T: wrap and turn (a short row method)

WS: wrong side

## CAST ON & COLLAR

CO 80 (84, 88) sts. Place a marker and join for working in the round, being careful not to twist sts.

**Note:** BOR M is at center back of sweater.

**Rib Rnd:** \*K2, p2; rep from \* to end of rnd.

Rep Rib Rnd until the collar measures 1.5" / 4 cm from the CO edge.

## YOKE

Change to larger needle.

Knit 1 rnd.

**Short Row 1 (RS):** K26 (27, 29), W&T.

**Short Row 2 (WS):** Purl to BOR M, sm, p26 (27, 29), W&T.

**Short Row 3:** Knit to 4 sts before the prev wrapped st, W&T.

**Short Row 4:** Purl to 4 sts before the prev wrapped st, W&T.

Rep [Short Rows 3 & 4] 3 more times.

**Next Row (RS):** Knit to BOR M.

Knit 1 rnd, resolving all wrapped sts as encountered.

### Inc Rnd #1:

**Size 1 Only:** \*K2, M1L, [k3, M1L] 2 times; rep from \* to end of rnd.

**Size 2 Only:** \*[K3, M1L] 2 times, [k2, M1L] 3 times; rep from \* to end of rnd.

**Size 3 Only:** \*K3, M1L, [k2, M1L] 4 times; rep from \* to end of rnd.

*30 (35, 40) sts inc; 110 (119, 128) sts total.*

Knitting even and Inc Rnds #2, 3 and 4 are worked.

**Total sts before final inc rnd and divide for sleeves:**  
**200 (224, 248) sts.**

### Inc Rnd #5:

**Size 1 Only:** \*K6, M1L, [k7, M1L] 2 times; rep from \* to end of rnd.

**Size 2 Only:** \*K7, M1L; rep from \* to end of rnd.

**Size 3 Only:** \*[K6, M1L] 9 times, [k7, M1L] 10 times; rep from \* to end of rnd.

*30 (32, 38) sts inc; 230 (256, 286) sts total.*

## DIVIDE FOR SLEEVES

K36 (41, 45), place next 42 (46, 52) sts on waste yarn for right sleeve, CO 8 sts using the backwards loop cast on method, k73 (82, 91) sts, place next 42 (46, 52) sts on waste yarn for left sleeve, CO 8 sts using the backwards loop cast on method, knit to end of rnd.

*162 (180, 198) sts total.*

## BODY

Knitting even, the rest of the body and lower hem are completed.

## SLEEVES (make 2 the same)

Place the 42 (46, 52) live sleeve sts onto the larger needle size in your preferred method for small circumference knitting. Join the working yarn to the center of the underarm CO sts. Pickup and knit 4 sts, knit across the live sts, pickup and knit 4 more sts.

*50 (54, 60) sts total.*